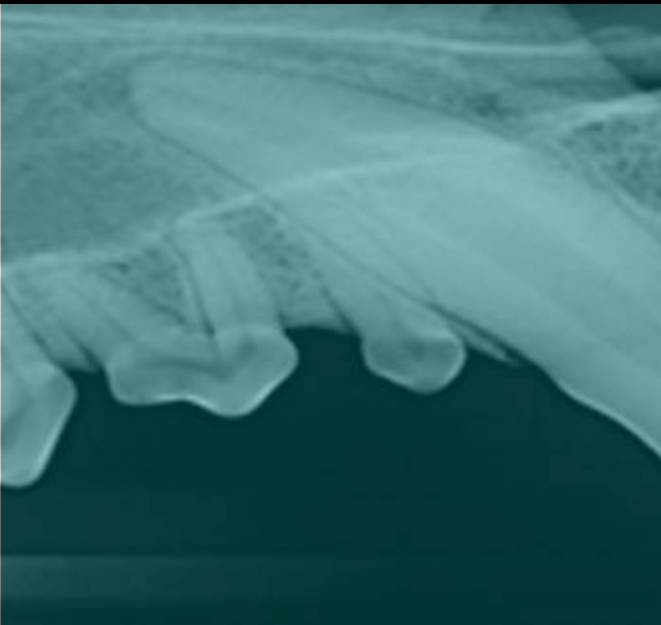


The Technology and Commitment You Need to  
Enhance Workflow, Communication, and Patient Care ▶

**evolve**  
medical imaging  
Serving Maine to Virginia



## **About Us**

Our in-depth expertise in veterinary digital imaging and diverse choice of technologies enables us to serve small and large animal clinics. As a trusted long-term partner, Evolve works side by side with Veterinarians to configure affordable, practical digital solutions. Our clients experience the following benefits:

- Improved workflow & efficiency
- Increased revenue
- Improved patient care and service

### **How We Do It**

When you become our client, Evolve becomes your true partner. We offer an unparalleled skill set that combines comprehensive expertise in veterinary imaging technologies with strong capabilities in communication and training. By leveraging both, we have enriched our value to our clients and enable them to trust us with their most challenging projects.

Our proven experience provides fast-track results through a rich set of consultative services such as:

- Focused, pragmatic and creative solutions
- Project management
- Installation and implementation
- Training and ongoing support



### Combination Full Body/Dental Digital Acquisition

Evolve offers affordable & dependable hybrid CR systems that support dental & full body imaging.

#### *The Benefits*

- Enhanced viewing & interpretation
- Improved patient care & service
- Fast ROI
- Improved workflow & efficiency



### Vet PACS

Easy-to-use PACS systems supports DICOM studies from multiple diagnostic modalities and provides enhanced more secure long term storage.

#### *The Benefits*

- Store and view ALL your diagnostic studies in ONE environment
- Indexed Archive
- Easy to use database utility
- Local and remote viewing

### Full Body Digital Acquisition

Our Full Body CR systems provide veterinarians the best radiographic images possible and are available in several footprints including space saving wall mounted options.

#### *The Benefits*

- Wide viewing latitude with digital tool sets
- Maximum uptime
- Fast & efficient image distribution
- Sized to fit your practice and budget





## Dental Digital Acquisition

Most dental pathology is missed without an x-ray. Improve patient care and increase revenue!

### *The Benefits*

- Easy to use
- Fast high resolution scanning
- Stationary & portable x-ray sources
- User friendly software interfaces

## Integrated Acquisition/PACS

Integrated solutions provide an economical approach to more robust technologies for acquisition and image management.

### *The Benefits*

- Complete out-of-the-box solution
- One vendor acquisition and PACS interface
- Supports additional modalities
- Less space and hardware required



## Equine Digital Acquisition

Evolve offers lightweight, portable, durable digital CR systems ideal for the equine practice with software to manage DICOM images.

### *The Benefits*

- Diagnostic quality imaging on site
- Portable and durable equipment
- Unsurpassed reliability

## What Our Clients Are Saying



*"I purchased the CR3600 offered by Evolve because of Evolve's extensive product knowledge and willingness to educate potential clients. And after the sale, Evolve spent three entire days teaching my staff to insure our success. Evolve didn't wait for problems. They told us the common errors so we never struggled with making them."*

**Mark Hanks, DVM**  
**Kindred Spirits, Maine**



*"As a result of switching to digital with Evolve, we have increased our income from radiology by approximately 20% and have eliminated all costs associated with x-ray film, developer solutions, processor maintenance and the time associated with taking repeat films. Evolve's technical support and assistance is superior."*

**Doug Hutchins, DVM**  
**Southern Maine Veterinary Care, Maine**



*"Evolve recommended the Quantum ScanX based on our needs and budget. It allowed us to continue to use our relatively new existing x-ray machine. We have been satisfied with Evolve's follow up service to work through small issues and questions that popped up as we adapted to digital. We have recommended Evolve to other local veterinary practices."*

**Kathy Kocher, DVM**  
**State College Veterinary Hospital, Pennsylvania**

**evolve**  
**medical imaging**

Serving Maine to Virginia

7 Industrial Way, Salem, NH 03079-2817  
Tel: 1-888-315-9007

6801 Eastern Avenue, Suite 209, Baltimore, MD 21224  
Tel: 1-410-631-0381

Learn more at: [evolvetechnology.com](http://evolvetechnology.com)